

SP-2210AS-M/CF

冲缝机

Stitching and punching machine



性能优势

一次装料可完成冲孔、缝制菊花眼孔两道工序。

效率

全程自动化操作冲孔、缝制菊花眼孔一次性完成。
冲孔孔径范围：0.8~6mm

适用范围

适用于各种面料服装的冲孔，缝制菊花眼孔工序。

Advantages

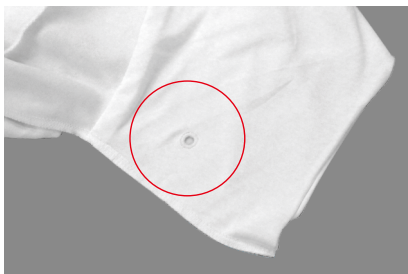
Two processes of punching and sewing round eye holes can be completed in one loading.

Efficiency

The whole process of automatic operation of punching and sewing round eye holes is completed at one time.
Punching hole diameter range: 0.8~6mm

Application

It is suitable for punching of various fabrics and garments and sewing of round eye holes.



视频及资料下载
Video and data download

最高缝纫速度 Highest sewing speed	2,700 rpm	气压 Air pressure	0.5 Mpa、1.8L/min
孔位 Diameter	0.8~6mm	马达 Motor	AC伺服马达 550W
缝制区域 Sewing area	最大 220×100mm	电压 Voltage	单相 Single phase 220V，3相 Three phase 380V

以上基础参数表为标准款机型