

www.china-supreme.com

为时尚产业 提供智能制造解决方案

*Intelligent manufacturing
Solutions for fashion industries*

SP-2210AS-H/CF

冲缝机

Automatic Punching and Pattern Sewing Machine



主要用于休闲类、针织类、梭织、牛仔、弹力布等服装,冲孔电绣,一次装料可完成冲孔、电绣、两道工艺,全程自动化操作,孔位精准,冲孔孔径范围为0.8-6mm。

Mainly used for shoes ,bags and caps, this machine ,with one feed can finish three procedures : punching,embroidery and sewing.One worker can operate many machines based on the automatic operating .The punching area is 0.8mm-6mm.



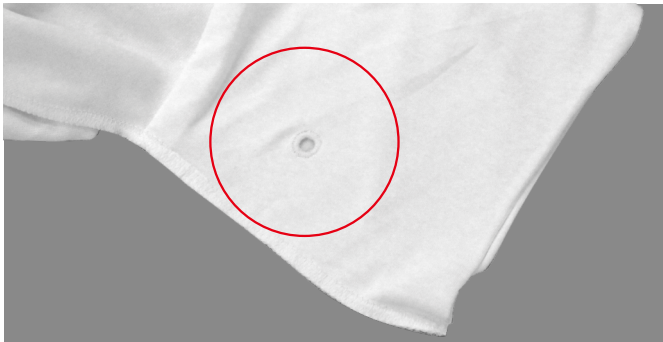
SUPREME

创新 · 智造
Innovation & Creation

实例分析 Comparisons

传统工艺 The traditional process	VS	自动化生产工艺 Automatic process
<p>1 手工操作：冲绣缝尺寸位置不精准 Manual: Inaccurate Position</p> <p>2 费工费时，成本高效率低 Waste time and labor, high cost low efficiency</p> <p>10小时产量1000件/2人 10 hour productivity 1000sets/person</p>		<p>1 冲孔、电绣两道工序一次性完成 One Procedure: Punching and embroidery combined</p> <p>普通工艺需要2人加工完成, 采用冲缝机1人可一次性完成 Normal process needs 2 workers, 2210AS-H/CF needs 1 work in 1 time</p> <p>10小时产量1200件/人 10 hour productivity 1200 set/worker</p>

客户体验 Cases



规格 Specification

型号Model	SP-2210AS-H/CF
线迹型式Line	单针平缝Single-needle flat seam
最高缝纫速度Highest sewing speed	2,700 rpm
缝制区域(X×Y) Sewing area (X×Y)	最大Max.220×100 mm
间歇压脚上升量 Rising amount by intermittent presser foot	22 mm
孔位 Diameter	0.8-6mm
间歇压脚行程 Stroke by intermittent presser foot	0或2 - 10 mm (出厂设置: 3mm) 0 or 2 - 10 mm (Original setting:3mm)
马达Motor	AC伺服马达550W AC servomotor 550W
电源Power	单相220V Single phase 220V, 三相380V Three phase
气压Air pressure	0.5 Mpa 1.8 l/min

以上型号仅供参考, 详细情况请咨询当地经销商。
The above types are only for reference, and you can consult local distributors for details.

为了改良, 产品规格若有变更, 恕不另行通知。为安全起见, 使用之前, 请仔细阅读使用手册。
Specifications are subject to change for improvement without further notice. Please carefully read the operating manual before use for safety.