

R2

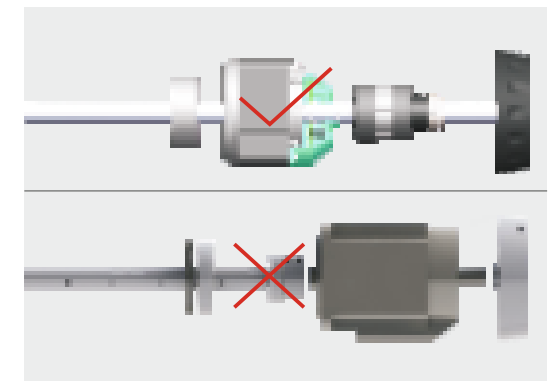
Computerized Lockstitch Machine With
Three automatic Functions



Computerized Lockstitch Machine










Factory reset



Stable and reliable

Specification

							A	M	H		NW/GW (kg)
		(mm)	(mm)	(mm)	(S.p.m)				(mm)		
R2-CZ	DB×1 11-18#	2	5	5-13	5000	●	●		671×248×550	34/42	
R2-CZ-7	DB×1 11-18#	2	7	5-13	5000	●	●		660×248×550	34/42	

(Note):

Auto trimming, auto reverse and electronic thread tension are equipped as standard.